

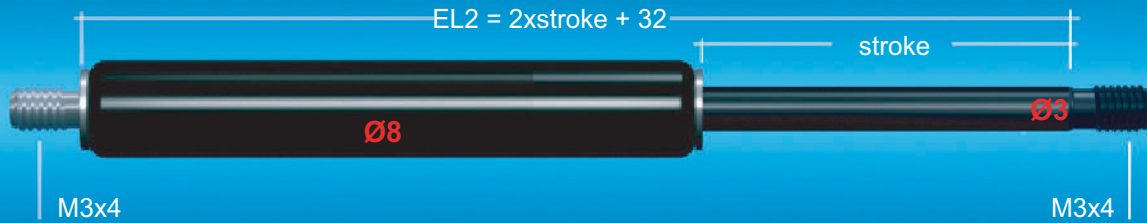
# Bansbach



*easylift*

THE WORLD OF MOTION

# Quick Ship



## Size 3/8

Extension force: 10 - 100N

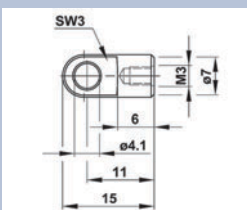
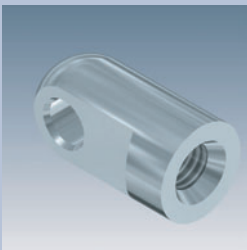
stroke	extended length (EL2)	part number	force [N]
20	72	<b>QS-08-020</b>	10 - 100 N  In case of an order, it is essential to mention
30	92	<b>QS-08-030</b>	
40	112	<b>QS-08-040</b>	
50	132	<b>QS-08-050</b>	
60	152	<b>QS-08-060</b>	
80	192	<b>QS-08-080</b>	

### Technical information:

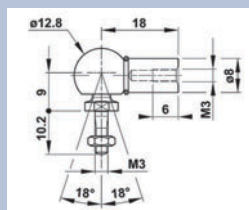
- Shipment in general within 3 working days upon receipt of your order (up to 25 pieces)
- The extension force must be indicated on the order
- Connecting parts, if chosen, will be enclosed
- Material:  
Piston rod: CeramPro®-coated  
Cylinder: brass
- Normal speed and end damping
- You will find general information and technical details in our main catalogue
- You will find customized gas springs in our main catalogue

### Optional connecting parts

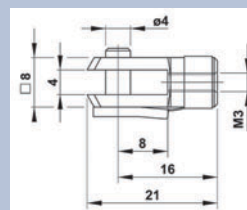
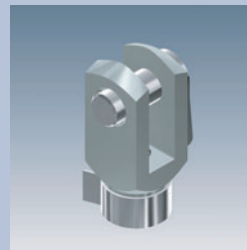
**Hinge eye**  
Q1



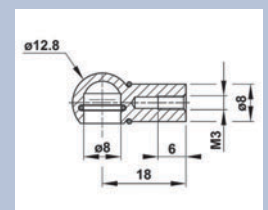
**Elbow joints**  
Q3



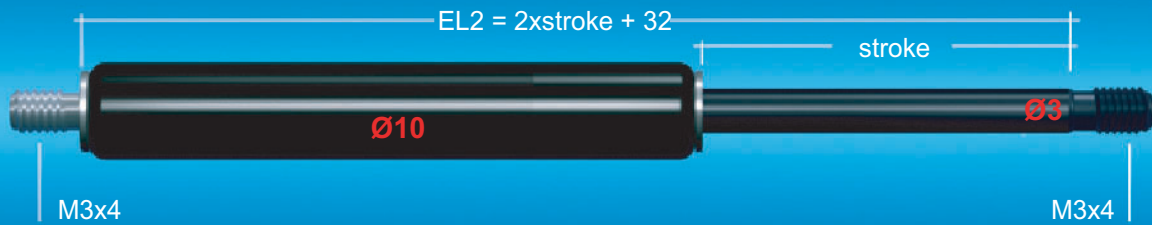
**Clevis**  
Q4



**Ball socket**  
Q6



Technische Änderungen und Druckfehler vorbehalten. The flyer is subject to technical alterations and printing mistakes.



## Size 3/10

Extension force: 10 - 100N

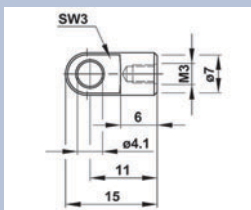
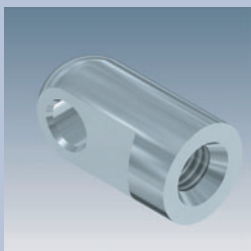
stroke	extended length (EL2)	part number	force [N]
20	72	QS-10-020	10 - 100 N  In case of an order, it is essential to mention
30	92	QS-10-030	
40	112	QS-10-040	
50	132	QS-10-050	
60	152	QS-10-060	
80	192	QS-10-080	

### Technical information:

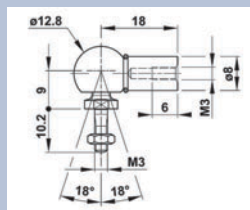
- Shipment in general within 3 working days upon receipt of your order (up to 25 pieces)
- The extension force must be indicated on the order
- Connecting parts, if chosen, will be enclosed
- Material:  
Piston rod: CeramPro®-coated  
Cylinder: powder-coated black
- Normal speed and end damping
- You will find general information and technical details in our main catalogue
- You will find customized gas springs in our main catalogue

### Optional connecting parts

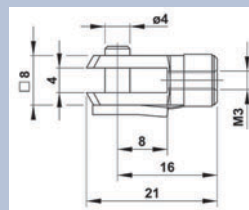
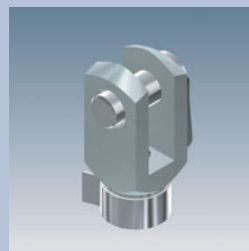
Hinge eye  
Q1



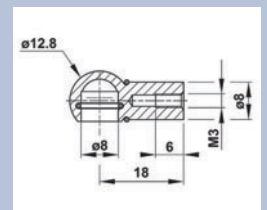
Elbow joint  
Q3



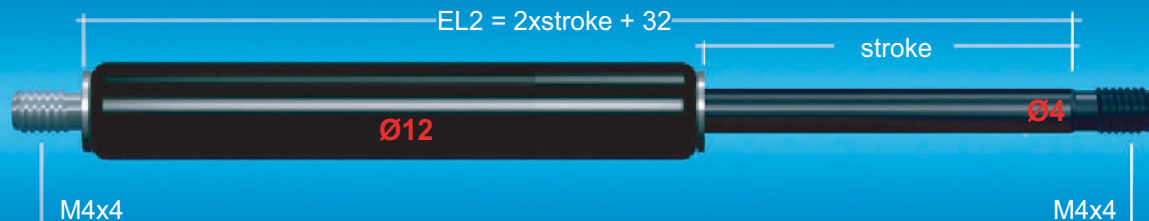
Clevis  
Q4



Ball socket  
Q6



Technische Änderungen und Druckfehler vorbehalten. The flyer is subject to technical alterations and printing mistakes.



## Size 4/12

Extension force: 10 - 180N

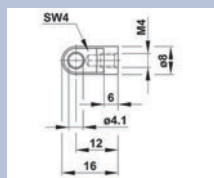
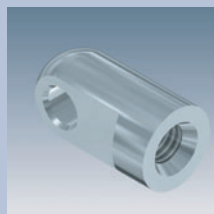
stroke	extended length (EL2)	part number	force [N]
20	72	QS-12-020	10 - 180 N  In case of an order, it is essential to mention
30	92	QS-12-030	
40	112	QS-12-040	
50	132	QS-12-050	
60	152	QS-12-060	
80	192	QS-12-080	
100	232	QS-12-100	
120	272	QS-12-120	
150	332	QS-12-150	

### Technical information:

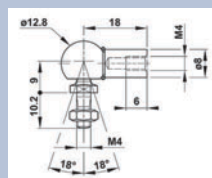
- If we receive the order by 12 am, shipment will be in general on the next working day (up to 25 pieces)
- The extension force must be indicated on the order
- The Bansbach 4/12 Quick Ship gas springs include a valve
- Connecting parts, if chosen, will be enclosed
- Material:  
Piston rod: CeramPro®-coated  
Cylinder: powder-coated black
- Normal speed and end damping
- You will find general information and technical details in our main catalogue
- You will find customized gas springs in our main catalogue

### Optional connecting parts

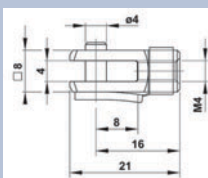
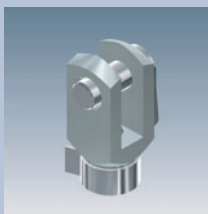
Hing eye  
S1



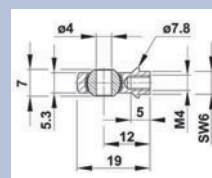
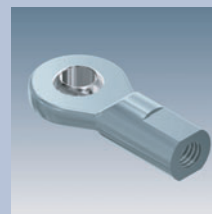
Elbow joint  
F4



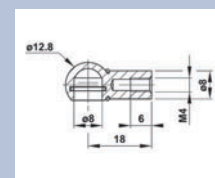
Clevis  
N4



Hinge heads  
R6



Ball socket  
F5

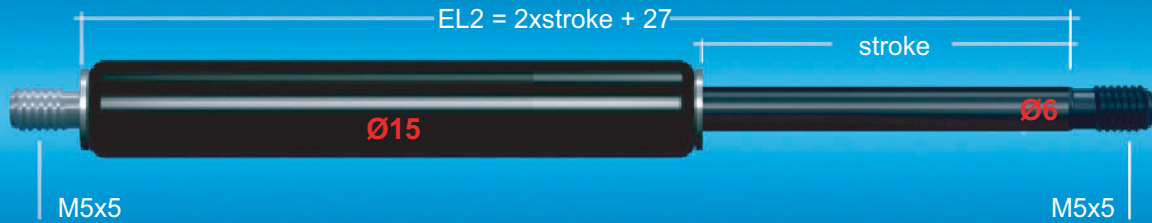


Technische Änderungen und Druckfehler vorbehalten. The flyer is subject to technical alterations and printing mistakes.

**Bansbach easylift GmbH**  
Barbarossastraße 8  
D-73547 Lorch

Tel. +49 (0) 7172/9107-0  
Fax +49 (0) 7172/9107-44

info@bansbach.de  
www.bansbach.de



## Size 6/15

Extension force: 20 - 400N

stroke	extended length (EL2)	part number	force [N]
20	67	QS-15-020	20 - 400 N  In case of an order, it is essential to mention
40	107	QS-15-040	
50	127	QS-15-050	
60	147	QS-15-060	
80	187	QS-15-080	
100	227	QS-15-100	
120	267	QS-15-120	
150	327	QS-15-150	
200	427	QS-15-200	

### Technical information:

- If we receive the order by 12 am, shipment will be in general on the next working day (up to 25 pieces)
- The extension force must be indicated on the order
- The Bansbach 6/15 Quick Ship gas springs include a valve
- Connecting parts, if chosen, will be enclosed
- Material:  
Piston rod: CeramPro®-coated  
Cylinder: powder-coated black
- normal speed and end damping
- You will find general information and technical details in our main catalogue
- You will find customized gas springs in our main catalogue

### Optional connecting parts

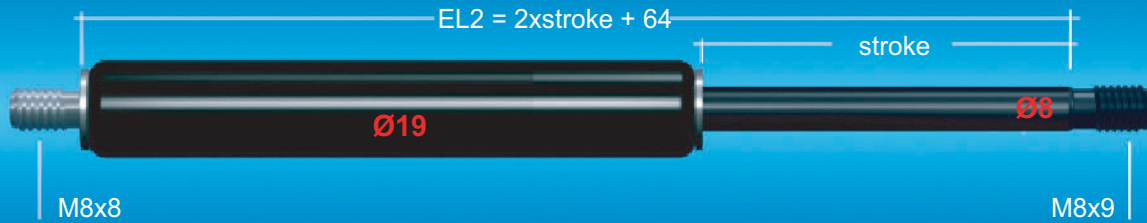
Hinge eye S2	Elbow joint B3	Clevis G5	Hinge head R7	Ball joint G6	Ball socket J3

Technische Änderungen und Druckfehler vorbehalten. The flyer is subject to technical alterations and printing mistakes.

**Bansbach easylift GmbH**  
Barbarossastraße 8  
D-73547 Lorch

Tel. +49 (0) 7172/9107-0  
Fax +49 (0) 7172/9107-44

info@bansbach.de  
www.bansbach.de



## Size 8/19

Extension force: 50 - 700N

stroke	extended length (EL2)	part number	force [N]
50	164	QS-19-050	50 - 700 N
100	264	QS-19-100	In case of an order, it is essential to mention
150	364	QS-19-150	
200	464	QS-19-200	
250	564	QS-19-250	
300	664	QS-19-300	

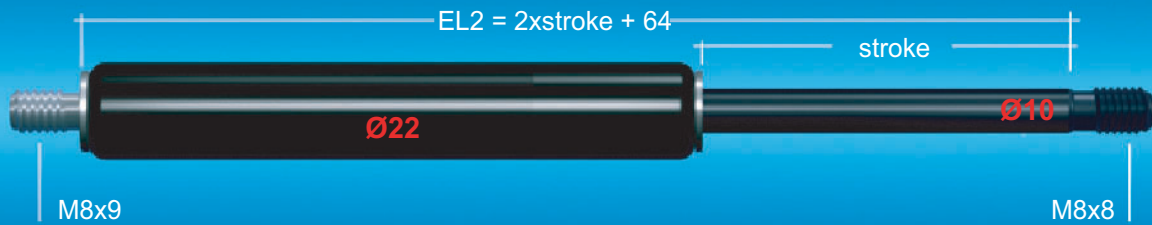
### Technical information:

- If we receive the order by 12 am, shipment will be in general on the next working day (up to 25 pieces)
- The extension force must be indicated on the order
- The Bansbach 8/19 Quick Ship gas springs include a valve
- Connecting parts, if chosen, will be enclosed
- Material:  
Piston rod: CeramPro®-coated  
Cylinder: powder-coated black
- Slow speed, strong end damping
- You will find general information and technical details in our main catalogue
- You will find customized gas springs in our main catalogue

### Optional connecting parts

Hinge eye S3	Elbow joint A3	Clevis C5	Hinge head A7	Ball joint B6	Ball socket P3

Technische Änderungen und Druckfehler vorbehalten. The flyer is subject to technical alterations and printing mistakes.



## Size 10/22

Extension force: 80 - 1.300N

stroke	extended length (EL2)	part number	force [N]
50	164	QS-22-050	80 - 1.300 N  In case of an order, it is essential to mention
100	264	QS-22-100	
150	364	QS-22-150	
200	464	QS-22-200	
250	564	QS-22-250	
300	664	QS-22-300	
350	764	QS-22-350	
400	864	QS-22-400	
450	964	QS-22-450	
500	1064	QS-22-500	
550	1164	QS-22-550	
600	1264	QS-22-600	
650	1364	QS-22-650	
700	1464	QS-22-700	

### Technical information:

- If we receive the order by 12 am, shipment will be in general on the next working day (up to 25 pieces)
- The extension force must be indicated on the order
- The Bansbach 10/22 Quick Ship gas springs include a valve
- Connecting parts, if chosen, will be enclosed
- Material:  
Piston rod: CeramPro®-coated  
Cylinder: powder-coated black
- Slow speed, strong end damping
- You will find general information and technical details in our main catalogue
- You will find customized gas springs in our main catalogue

### Optional connecting parts

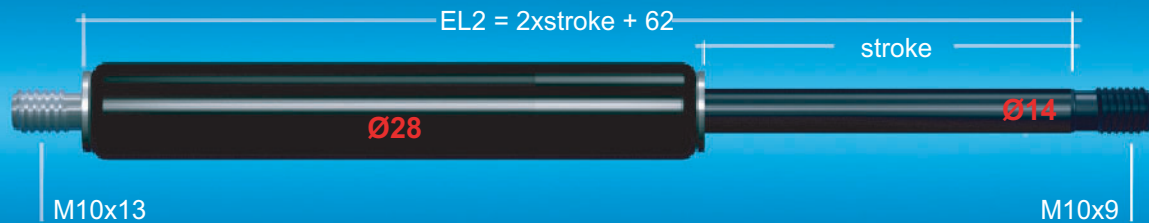
Hinge eye S3	Elbow joint A3	Clevis C5	Hinge head A7	Ball joint B6	Ball socket P3

Technische Änderungen und Druckfehler vorbehalten. The flyer is subject to technical alterations and printing mistakes.

**Bansbach easylift GmbH**  
Barbarossastraße 8  
D-73547 Lorch

Tel. +49 (0) 7172/9107-0  
Fax +49 (0) 7172/9107-44

info@bansbach.de  
www.bansbach.de



## Size 14/28

Extension force: 150 - 2.500N

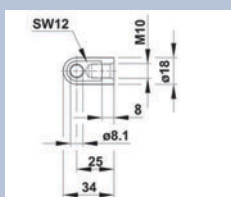
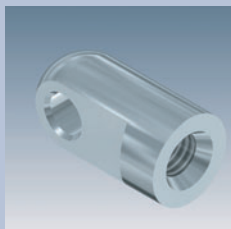
stroke	extended length (EL2)	part number	force [N]
100	262	QS-28-100	150 - 2.500 N  In case of an order, it is essential to mention
150	362	QS-28-150	
200	462	QS-28-200	
250	562	QS-28-250	
300	662	QS-28-300	
350	762	QS-28-350	
400	862	QS-28-400	
450	962	QS-28-450	
500	1062	QS-28-500	
550	1162	QS-28-550	
600	1262	QS-28-600	
650	1362	QS-28-650	
700	1462	QS-28-700	
750	1562	QS-28-750	

### Technical information:

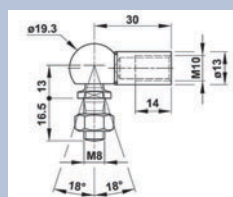
- If we receive the order by 12 am, shipment will be in general on the next working day (up to 25 pieces)
- The extension force must be indicated on the order
- The Bansbach 14/28 Quick Ship gas springs include a valve
- Connecting parts, if chosen, will be enclosed
- Material:  
Piston rod: CeramPro®-coated  
Cylinder: powder-coated black
- Slow speed, strong end damping
- You will find general information and technical details in our main catalogue
- You will find customized gas springs in our main catalogue

### Optional connecting parts

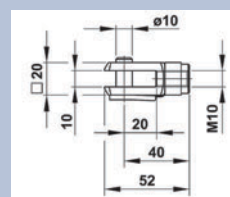
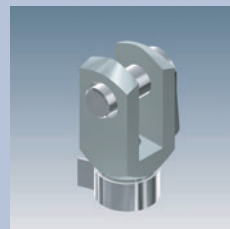
Hinge eye  
S4



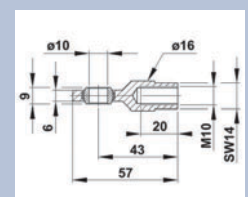
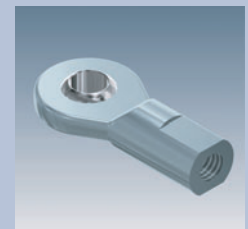
Elbow joint  
A4



Clevis  
D9



Hinge head  
A8



Technische Änderungen und Druckfehler vorbehalten. The flyer is subject to technical alterations and printing mistakes.

**Bansbach easylift GmbH**  
Barbarossastraße 8  
D-73547 Lorch

Tel. +49 (0) 7172/9107-0  
Fax +49 (0) 7172/9107-44

info@bansbach.de  
www.bansbach.de





## Size 20/40

Extension force: 500 - 5.000N

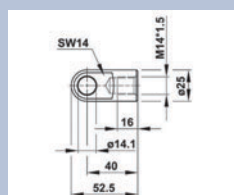
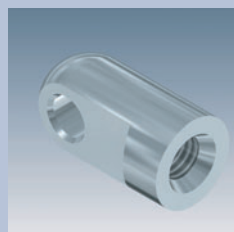
stroke	extended length (EL2)	part number	force [N]
100	317	QS-40-100	500 - 5.000 N  In case of an order, it is essential to mention
150	417	QS-40-150	
200	517	QS-40-200	
300	717	QS-40-300	
400	917	QS-40-400	
500	1117	QS-40-500	
600	1317	QS-40-600	
800	1717	QS-40-800	
1000	2117	QS-40-1000	

### Technical information:

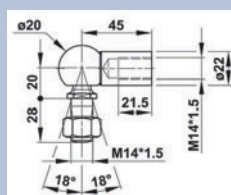
- If we receive the order by 12 am, shipment will be in general on the next working day (up to 25 pieces)
- The extension force must be indicated on the order
- The Bansbach 20/40 Quick Ship gas springs include a valve
- Connecting parts, if chosen, will be enclosed
- Material:  
Piston rod: CeramPro®-coated  
Cylinder: powder-coated black
- Slow speed, strong end damping
- You will find general information and technical details in our main catalogue
- You will find customized gas springs in our main catalogue

### Optional connecting parts

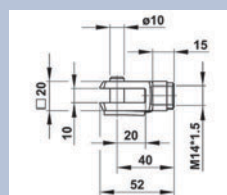
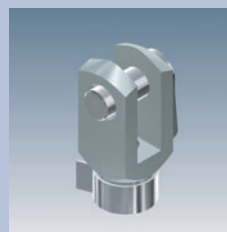
Hinge eye  
S5



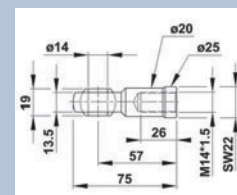
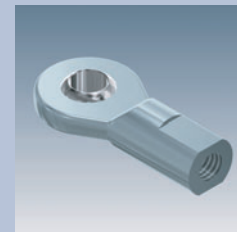
Elbow joint  
B4



Clevis  
L5



Hinge head  
C8

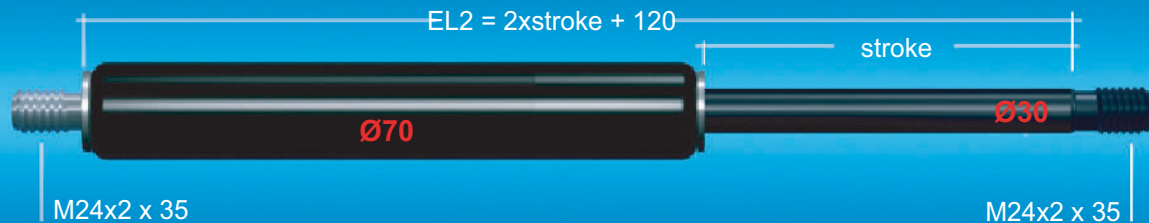


Technische Änderungen und Druckfehler vorbehalten. The flyer is subject to technical alterations and printing mistakes.

**Bansbach easylift GmbH**  
Barbarossastraße 8  
D-73547 Lorch

Tel. +49 (0) 7172/9107-0  
Fax +49 (0) 7172/9107-44

info@bansbach.de  
www.bansbach.de



## Size 30/70

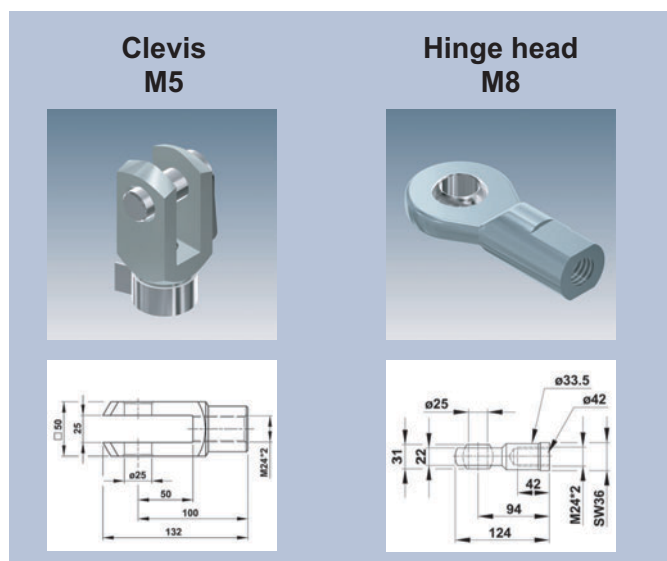
Extension force: 2.000 - 13.000N

stroke	extended length (EL2)	part number	force [N]
100	320	QS-70-100	2.000 - 13.000 N  In case of an order, it is essential to mention
200	520	QS-70-200	
300	720	QS-70-300	
400	920	QS-70-400	
500	1120	QS-70-500	
600	1320	QS-70-600	
700	1520	QS-70-700	
800	1720	QS-70-800	

### Technical information:

- Shipment in general within 5 working days upon receipt of your order (up to 25 pieces)
- The extension force must be indicated on the order
- The Bansbach 30/70 Quick Ship gas springs include a valve
- Connecting parts, if chosen, will be enclosed
- Material:  
Piston rod: hardchromed  
Cylinder: powder-coated black
- Normal speed and end damping
- You will find general information and technical details in our main catalogue
- You will find customized gas springs in our main catalogue

### Optional connecting parts



Technische Änderungen und Druckfehler vorbehalten. The flyer is subject to technical alterations and printing mistakes.