



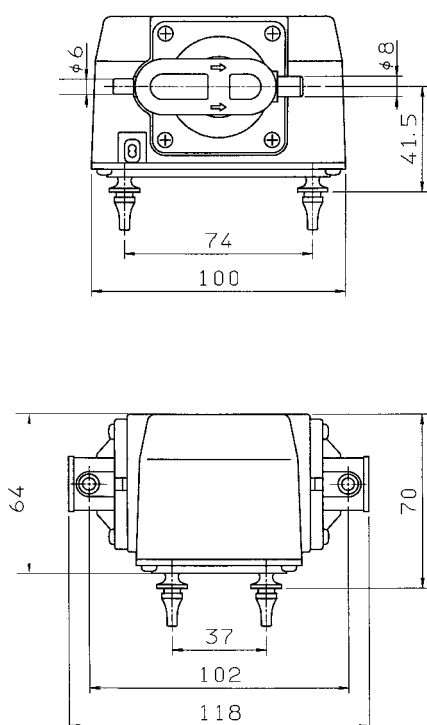
## OEM assembly pump

MK-10 / MK-10-12V / MK-10-24V

### Product characteristics

- Pressure and vacuum (optional) possible
- Compact design
- OEM assembly pump without overall cover

### Dimensions



### Technical data

Model		Pressure	Vacuum	MK-10	MK-10-12V	MK-10-24V
Air flow <sup>1) 2)</sup>	l/min	0 mbar	0 mbar rel	20	20	20
		50 mbar	- 50 mbar rel	15	15	15
		100 mbar	- 100 mbar rel	11	11	11
		150 mbar	- 150 mbar rel	6	6	6
Voltage <sup>4)</sup>	V			230	12 <sup>3)</sup>	24 <sup>3)</sup>
Power consumption	W	100 mbar		7-8		
Noise level	dB(A)			38	38	38
Dimensions	mm	L x W x H		118 x 100 x 70		
Connection	mm	Ø outside		6/8	6/8	6/8
Net weight	kg			0.7	0.7	0.7

This model is offered in standard design only as a pressure pump. Please advise when ordering if you would like it as a vacuum version (rebuilding required).

<sup>1)</sup> Product performance may vary +/- 10% from performance curves

<sup>2)</sup> The pneumatic values do not correspond for mixed operation, i. e. with both vacuum on the suction port and pressure on the outlet

<sup>3)</sup> Please note: voltage of MK-10-12V and MK-10-24V is AC

<sup>4)</sup> Values at 50 Hz

### Performance data

Optimal operating span

