



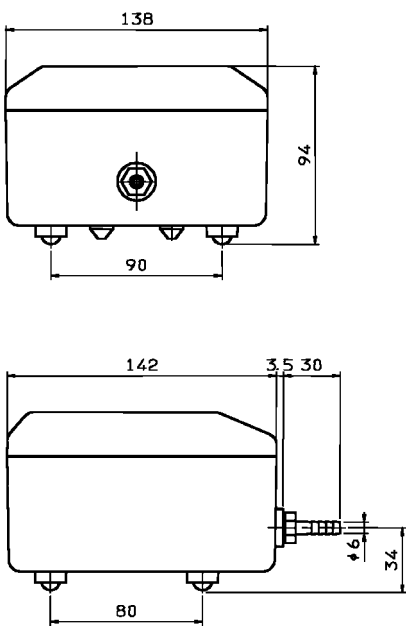
Phoe-niX series

MKC-510V

Product characteristics

- Connecting hose and air distributor included in delivery

Dimensions



Technical data

Model			MKC-510V
Air flow ¹⁾	l/min	0 mbar	20
		50 mbar	15
		100 mbar	11
		150 mbar	6
Voltage ²⁾	VAC		230
Power consumption	W	100 mbar	9
Noise level	dB(A)		30
Dimensions	mm	L x W x H	175.5 x 138 x 94
Connection	mm	Ø outside	6
Net weight	kg		1.2

¹⁾ Product performance may vary +/- 10% from performance curves
²⁾ Values at 50 Hz

Performance data

Optimal operating span

