

# Vibrationsdæmpere

## Vibration muffler

For ikke at sprede en maskines rystelser til gulvet og andre omgivelser, kan man med fordel montere maskinen på vibrationsdæmpere.

Om end du vil skåne en bygning, maskine eller mennesker for skader, stød, støj og belastninger, kan du finde de rette vibrationsdæmpere i vores udvalg.

Udover de viste har vi adgang til et stort udvalg af gummifødder og svingningsdæmpere i mange forskellige mål og med forskellige gevind.

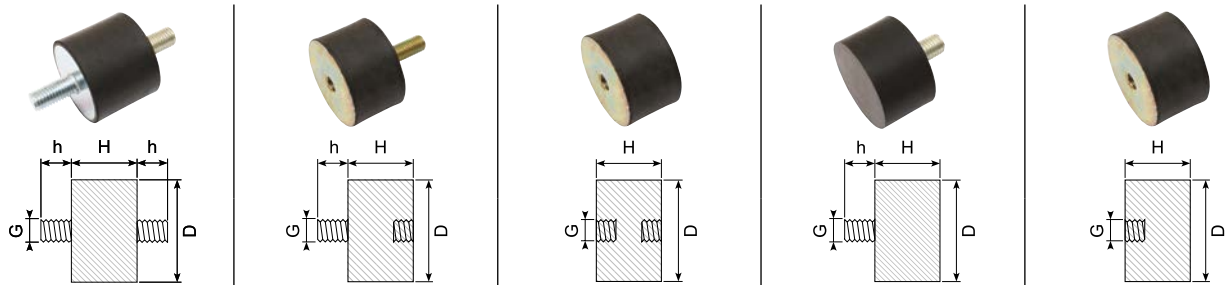
In order not to spread the vibrations of a machine to the floor and other environments, it is beneficial to mount the machine on vibration mufflers.

If you want to protect and shield a building, a machine or people from injuries, shocks, noises and loads, you will certainly find the right vibration muffler in our selection.

In addition to the vibration mufflers shown in this catalog, we have a wide selection of rubber feet and vibration dampers with many different sizes and threads.



# Vibrationsdæmpere / Vibration muffler



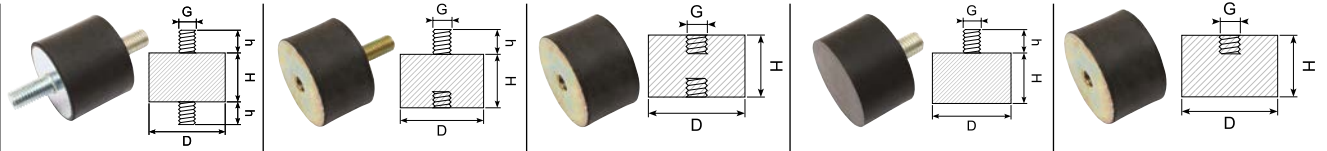
D	H	Type M (1)	Type B (2)	Type C (3)	Type D (4)	Type E (5)
6	7					
8	5					
8	8		39.B08/08-43			
8	10					
9	12					
10	8					
10	10				39.D10/10	
10	15					
10	17					
10	18					
10	30					
11	11					
12	10					
13	26					
15	4				39.D15/4G-M4x6	
15	5					
15	6					
15	7					
15	8					
15	9					
15	10		39.B15/10		39.D15/10 (M5x15) 39.D15/10-M6 (M6x18)	
15	12					
15	13					
15	15		39.B15/15 39.B15/15-M4x8		39.D15/15 (M5x15) 39.D15/15-M6 (M6x15)	
15	20					
15	25					
15	30					
16	18		39.B16/18			
18	10	39.M1810				
20	5					
20	8					
20	10	39.M20/10-M6 (M6x18) 39.M20/10 (M8x18)	39.B20/10-M6 (M6x18) 39.B20/10 (M8x18)	39.C20/10 (M4)	39.D20/10(M6)	39.E20/10-M6 (M6) 39.E20/10 (M8)
20	11					
20	12					
20	13					
20	15	39.M2015 39.M20/15-A4	39.B20/15 (M8x18) 39.B20/15-M6-43 39.B20/15-M6 39.B20/15-A4		39.D20/15E	
20	17					
20	20	39.M2020 39.M2020-M8 39.M2020-M6 (M6x15) 39.M2020-M6-45	39.B2020 39.B20/20-M6-43 39.B20/20-M6-55	39.C20/20 39.C20/20-A4	39.D20/20 (M5x15) 39.D20/20-M6 (M6x18) 39.D20/20-M6 (M6x15) 39.D20/20-M6-43	
20	23					
20	25					
20	30					
25	8					
25	10	39.M25/10-M8		39.C25/10 (M4)		39.E25/10-M6 (M6) 39.E25/10 (M8)
25	12					
25	13		39.B2513			
25	14					

G	h
M6	6, 8, 10, 12, 15, 18, 20, 23, 28
M8	8, 10, 12, 15, 18, 20, 23, 25, 28, 33

G	h
M10	10, 12, 15, 18, 20, 23, 25, 28, 33, 38, 43
M12	10, 12, 18, 20, 23, 25, 27, 33, 37, 42

Fåes i tre hårdheder: Shore 43, 55 og 68.  
Også mulighed for rustfri gevind.  
Available in three hardnesses: SH 43, 55 and 68.  
Also option for stainless threads.

# Vibrationsdæmpere / Vibration muffler



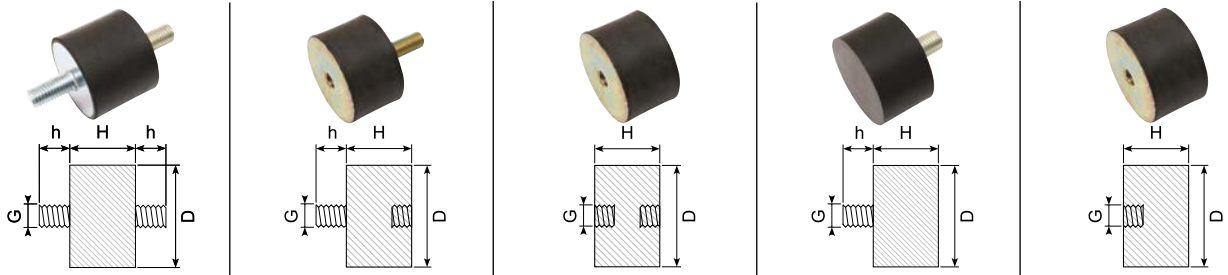
D	H	Type M (1)	Type B (2)	Type C (3)	Type D (4)	Type E (5)
25	15	39.M2515		39.C25/15	39.D25/15 39.D25/15-A2	
25	17					
25	18					
25	19					
25	20	39.M2520 39.M2520-M6				
25	22	39.M25/22				
25	25		39.B25/25 (M8x18) 39.B25/25-M6 (M6x18)	39.C25/25-M6		
25	27					
25	28					
25	30		39.B25/30			
26	22					
30	8				39.D30/8-M6x23 39.D30/8-M6x18	
30	10	39.M30/10 (M8x23)			39.D30/10 39.D30/10-M6x15 39.D30/10-M6 (M6x18) 39.D30/10-M6x28	39.E30/10-M6-43
30	12					
30	13					
30	15	39.M3015-M8x12 39.M3015-M8x15			39.D30/15 39.D30/15-M6 (M6x18) 39.D30/15-M8x23	39.E30/15-M6 (M6) 39.E30/15 (M8)
30	17					
30	18					
30	20	39.M3020 39.M3020-55 39.M30/20XX	39.B30/20 39.B30/20X 39.B30/20-M6x10-43 39.B30/20-M6x10-57 39.B30/20XX	39.C30/20 (M8)	39.D30/20 39.D30/20-M6 39.D30/20-M8x15	39.E30/20-M6 (M6) 39.E30/20 (M8)
30	22					
30	25					
30	30	39.M3030 39.M3030-SS	39.B30/30 39.B30/30-M6 39.B30/30-M6-M8x23	39.C30/30 39.C30/30-A4	39.D30/30 39.D30/30-M6 (M6x18)	39.E30/30-M6 (M6) 39.E30/30 (M8)
30	35					39.E30/35
30	40			39.C30/40		
30	45					
40	10					
40	15				39.D40/15 39.D40/15-M6 (M6x18)	39.E40/15-SH43
40	20	39.M40/20 (M8x23)	39.B40/20 (M8x23)		39.D40/20 (M8x18) 39.D40/20-M6 (M6x18) 39.D40/20-M10 (M10x20) 39.D40/20-A2	39.E40/20-M6 (M6) 39.E40/20 (M8)
40	25	39.M4025		39.C40/25 (M8)	39.D40/25-A2	
40	27					
40	28					
40	30	39.M4030	39.B40/30 (M8x23)	39.C40/30	39.D40/30-A2 39.D40/30 39.D40/30-M8 (M8x18)	39.E40/30 (M8)
40	35		39.B40/35 (M8x23)		39.D40/35-A2 39.D40/35 (M10x20)	
40	38	39.M4038 39.M40/38-M12				
40	40	39.M40/40 (M10x28)		39.C40/40 (M8) 39.C40/40-M10 (M10)	39.D40/40-A2 39.D40/40-M8x23-68 39.D40/40 (M10x20)	
40	45				39.D40/45-A2	
40	60					

G	h
M10	10, 12, 15, 18, 20, 23, 25, 28, 33, 38, 43
M12	10, 12, 18, 20, 23, 25, 27, 33, 37, 42

G	h
M6	6, 8, 10, 12, 15, 18, 20, 23, 28
M8	8, 10, 12, 15, 18, 20, 23, 25, 28, 33

Fåes i tre hårdheder: Shore 43, 55 og 68. Også mulighed for rustfri gevind. Available in three hardnesses: SH 43, 55 and 68. Also option for stainless threads.

# Vibrationsdæmpere / Vibration muffler



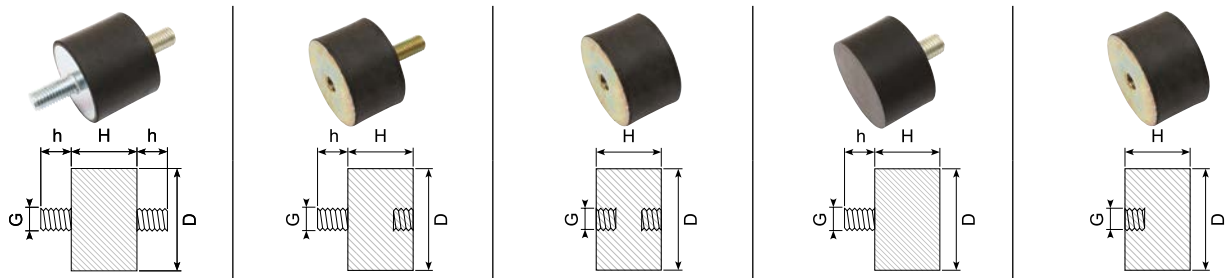
D	H	Type M (1)	Type B (2)	Type C (3)	Type D (4)	Type E (5)
50	7					
50	9					
50	12					
50	15					
50	17					
50	20	39.M50/20NBR	39.B50/20-M8	39.C50/20 (M10)	39.D50/20 39.D50/20-M12 (M12x23)	39.E50/20 (M8) 39.E50/20-M10 (M10) 39.E50/20-M12 (M12)
50	21		39.B50/21			
50	25	39.M5025		39.C50/25 (M10)	39.D50/25 (M10x20) 39.D50/25-M12 (M12x23)	39.E50/25 (M10) 39.E50/25-M12 (M12)
50	27					
50	28					
50	30	39.M5030 39.M50/30NBR	39.B50/30	39.C50/30 39.C50/30-M8 39.C50/30-68 39.C50/35	39.D50/30 39.D50/30-M10 (M10x20)	
50	35					
50	37					
50	40	39.M5040	39.B50/40-43	39.C50/40-M12 39.C50/40		39.E50/40 (M10) 39.E50/40-M12 (M12)
50	42					
50	45	39.M5045		39.C50/45		
50	50	39.M5050	39.B50/50 39.B50/50-M10 (M10x28)		39.D50/50	
50	80				39.D50/80	
60	15					
60	16					
60	20					
60	25					
60	30		39.B60/30 (M12x25)	39.C60/30-M8 (M8) 39.C60/30 (M10)	39.D60/30 (M10x28) 39.D60/30-M12 (M12x23)	39.E60/30 (M10) 39.E60/30-M12 (M12)
60	35	39.M6035				
60	40		39.B60/40	39.C60/40 39.C60/40-M10 SH 43 39.C60/40-M12 SH 43	39.D60/40 (M10x28) 39.D60/40M12 (M12x23)	39.E60/40 (M10) 39.E60/40-M12 (M12)
60	45		39.B60/45-A2			
60	50	39.M6050			39.D6050	
60	60					
65	35			39.C65/35 39.C65/35.M10 (M10)	39.D65/35	
70	20					
70	25					
70	30					
70	35					39.E70/35 (M12)
70	40				39.D70/40 (M10x28) 39.D70/40-M12 (M12x27)	
70	45					
70	50					39.E70/50 (M12)
70	53					
70	55					
70	60					
70	70				39.D70/70	

G	h
M6	6, 8, 10, 12, 15, 18, 20, 23, 28
M8	8, 10, 12, 15, 18, 20, 23, 25, 28, 33

G	h
M10	10, 12, 15, 18, 20, 23, 25, 28, 33, 38, 43
M12	10, 12, 18, 20, 23, 25, 27, 33, 37, 42

Fåes i tre hårdheder: Shore 43, 55 og 68.  
Også mulighed for rustfri gevind.  
Available in three hardnesses: SH 43, 55 and 68.  
Also option for stainless threads.

# Vibrationsdæmpere / Vibration muffler



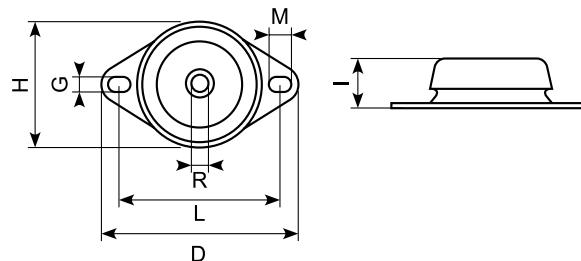
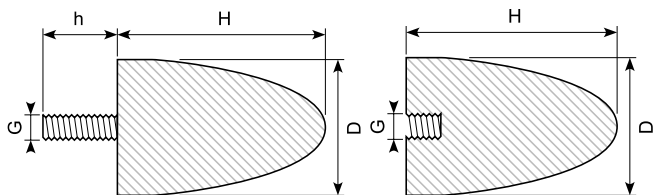
D	H	Type M (1)	Type B (2)	Type C (3)	Type D (4)	Type E (5)
75	20					
75	25					
75	30		39.B75/30 (M12x25)	39.C75/30 (M12) 39.C75/30-M10 (M10) 39.C75/30-M10-68	39.D75/30	39.E75/30 (M10) 39.E75/30-M12 (M12)
75	35					
75	40	39.M7540	39.B75/40-M10x18 39.B75/40 (M12x25) 39.B75/40-M12x40			
75	45			39.C70/45-M10		
75	50	39.M7550	39.B75/50 (M12x25)	39.C75/50-M12	39.D75/50-M10 (M10x28) 39.D75/50-M12	39.E75/50 (M10) 39.E75/50-M12 (M12)
75	55			39.C75/55 39.C75/55-43 39.C75/55-M10 (M10)		
75	60	39.M7560				
75	70					
75	100			39.C75/100 39.C75/100-M16		
80	17					
80	18					
80	30					
80	40					
80	50	39.M8050				39.E80/50 (M12) 39.E80/50-M16 (M16)
80	55					
80	60					
80	65					
80	70					
80	75					
80	80					
90	60					
100	25					39.E100/25 (M16)
100	30		39.B100/30 (M16x46)		39.D100/30 (M16x41)	39.E100/30 (M16)
100	35					
100	40		39.B100/40 (M16x46)	39.C100/40		39.E100/40 (M16) 39.E100/40NBR43 39.E100/40NBR68
100	45					
100	50		39.B100/50 (M16x46)	39.C100/50 (M16) 39.C100/55NBR68	39.D100/50 (M16x41)	39.E100/50 (M16) 39.E100/55NBR68
100	55					
100	60					
100	65					
100	70					
100	75		39.B100/75 SH 43	39.C100/75 (M16)	39.D100/75 (M16x41)	39.E100/75 (M16)
100	80					
100	100					
150	40			39.C150/40		
150	50			39.C150/50	39.D150/50 (M16x41)	39.E150/50 (M16) 39.E150/50-M20 (M20)
150	55					
150	60					
150	75			39.C150/75 (M16) 39.C150/75-M20		39.E150/75 (M16) 39.E150/75-M20 (M20)
200	100			39.C200/100 (M20)	39.D200/100 (M20x41)	39.E200/100 (M20)

G	h
M6	6, 8, 10, 12, 15, 18, 20, 23, 28
M8	8, 10, 12, 15, 18, 20, 23, 25, 28, 33

G	h
M10	10, 12, 15, 18, 20, 23, 25, 28, 33, 38, 43
M12	10, 12, 18, 20, 23, 25, 27, 33, 37, 42

Fåes i tre hårdheder: Shore 43, 55 og 68.  
Også mulighed for rustfri gevind.  
Available in three hardnesses: SH 43, 55 and 68.  
Also option for stainless threads.

# Vibrationsdæmpere / Vibration muffler

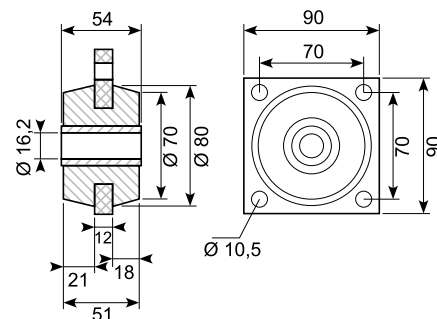


KP-D-no.	KP-E-no.	D/H	D	H	G	h
39.KP-D10/10	39.KP-E10/10	10/10	10	10	M5	12
39.KP-D15/22	39.KP-E15/22	15/22	15	22	M6	18
39.KP-D20/15	39.KP-E20/15	20/15	20	15	M6	10
39.AV2024	39.KP-E20/24	20/24	20	24	M6	18
39.KP-D25/16	39.KP-E25/16	25/16	25	16	M6	18
39.KD25/17		25/17	25	17	M6	8
39.KP-D25/20	39.KP-E25/20	25/20	25	20	M6	18
39.KP-D30/30	39.KP-E30/30	30/30	30	30	M8	20
39.KP-D30/36	39.KP-E30/36	30/36	30	36	M8	20
39.KP-D30/36-A2		30/36	30	36	M12	37
39.LP-D30/36-A4		30/36	30	36	M12	37
39.AV30		30/40	30	40	M8	23
	39.KP-E35/40	35/40	35	40	M8	23
39.KD50/18		50/18	50	18	M10	18
39.KP-D50/50	39.KP-E50/50	50/50	50	50	M10	28
39.KP-D50/58		50/58	50	58	M10	28
39.KP-D50/61	39.KP-E50/61	50/61	50	61	M8	28
39.KP-D50/67	39.KP-E50/67	50/67	50	67	M8	33
39.AV5068	39.KP-E50/68	50/68	50	68	M10	38
39.KP-D60/40	39.KP-E60/40	60/40	60	40	M10	28
39.KP-D70/58	39.KP-E70/58	70/58	70	58	M12	32
39.KP-D70/60	39.KP-E70/60	70/60	70	60	M12	37
39.KP-D75/89	39.KP-E75/89	75/89	75	89	M12	37
39.KP-D75/89-10	39.KP-E75/89	75/89	75	89	M10	37
	39.KP-E75/89-M10	75/89	75	89	M10	
39.AV9580	39.KP-E95/80	95/80	95	80	M16	41
39.KP-D115/136	39.KP-E115/136	115/136	115	136	M16	41
39.KP-D118/77	39.KP-E118/77	118/77	118	77	M16	41

Varenr.	I	H	G	M	R	L	D	Load KG
39.GMF67/34	34	67	11		M12	88	110	60
39.GMF75/34	34	75	12	16	M12	100	130	100
39.GMF100/42	42	100	12	16	M12/M14/M16	120	153	200-300
39.GMF108/46	46	108	14	18	M12/M14/M16	142	177	400-500
39.GMF122/50	50	122	14	20	M16	158	192	600-800
39.GMF150/54	54	150	14	18	M18/M20	183	218	1000-1200

## 39.103195

Material: NBR  
Hardness: SH 55



## Skaffevarer / Special order item

Hvis du ikke finder, hvad du søgte i vores katalog eller på vores webshop Kantlister.dk, kan vi sikkert alligevel skaffe netop de varer, du skal bruge. Kontakt os, og vi finder en løsning.

If you do not find what you searched for in our catalog or webshop Kantlister.dk, we can probably order the items you need. Contact us and we will find a solution.

